

# Salado craftsman's woodworks bring grace to Methodist Church

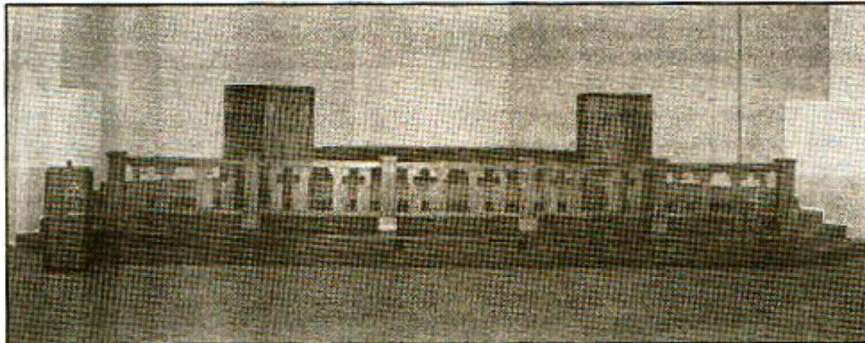
Master Craftsman Robert Pascoe designed and constructed the altar at the new site of the Salado Methodist Church.

The components of the hand crafted woodwork include the altar rail, altar table, baptismal font, pulpit, lectern, and flower stands. Pascoe said, "Our design challenge was to tie the grand architecture of the new meeting hall to the traditions of worship employed by the Salado congregation for over 100 years."

Pascoe chose to compliment the crisp, clean lines of the new meeting hall with the simple elegance of mission style furnishings. "With the mission theme as a starting point, I was able to integrate Methodist symbolism into the altar table and altar rail", Pascoe said.

The Salado Methodist congregation has been planning for the growth of its membership for over five years. Crowded worship services and strained resources at their 100+ year old location on Thomas Arnold Street in Salado caused the congregation to plan for, fund and construct a new facility on the East side of the village. On May 15, the congregation met at the old location for the last time concluding the worship service with a march down Main Street, across the Salado Creek and up the Royal Street hill to the new location. The festivities were concluded with a service at the new altar created by Pascoe.

Pascoe, who plies his trade at the Salado Saw-

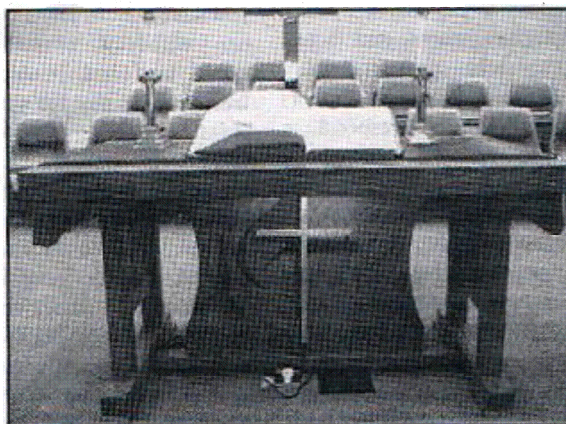


*This altar was designed and crafted by Robert Pascoe for the Salado United Methodist Church.*

mill, will build to your specification. "I would rather do custom work," Pascoe says. "Making the same piece over and over again becomes monotonous. Custom pieces offer design challenges and learning experiences." Pascoe says that clients seek out custom furniture shops for several reasons. They are often seeking something to fit into a specific space or match another piece they already own. They may have seen a piece that is no longer available from the manufacture or an antique they would like to duplicate. "Most importantly," he observes, "customers want a quality piece, designed and built by someone who is passionate about the process."

Pascoe began working in wood in the basement of his boyhood home. One of his early pieces was made totally with hand tools in the back bedroom of his first apartment. "When our family began to grow," Pascoe says, "I had to surrender my 'workshop' to a crib and bassinet. But subsequent homes always had space for a workshop."

Following retirement from IBM, Pascoe turned



*Altar table by Robert Pascoe, of Salado*

his full attention to woodworking, with a shop in his garage and an outlet in one of the shops on Salado's Main Street. Success caused him to expand to larger quarters and, with help from friends and family, he built the Sawmill. Pascoe noted, "Not only is the physical space just right, we tried to add the style and charm of building 100+ years old, with exposed beams, lots of wood molding and floors, and paneled walls. Our goal was to make the building a reflection of our 'extraordinary woodworks' theme in the artistic atmosphere of Salado."

Pascoe notes it a dream of architects to design a church or temple. He says that it is the same

for woodworkers, who feel fulfilled by designing and building the altar in a house of worship. "I am grateful that the Salado Methodist Church gave me such an opportunity," Pascoe said.

The Salado Sawmill, a division of XtraWorX, LLC, is located at 409 Salado Plaza Drive at the entrance to the Mill Creek Subdivision. The Salado Sawmill is open from 10 a.m.-5 p.m., Tuesday through Saturday, and is always closed the forth weekend of the month. In addition to retail sales, custom furniture orders may be placed at this location. The gallery can also be accessed on the World Wide Web at [www.saladosawmill.com](http://www.saladosawmill.com).

